

AHCON
WHEEL SERVICE EQUIPMENT

OPERATOR'S MANUAL
TS 9000



INDEX

	Page
Manufacturer's Information	3
Warnings	4
Risks and Labelling	5
Safety Precautions	6
Warranty	7
Dimensions and Weight	8
Shipping Dimensions	8
Transport and Handling	9
Unpacking	9
Connection	10
Operation	11-12
Noise	13
Special Functions and Accessories	13
Standards for Built-in Parts	13
Maintenance	14
Repair	14
Charts	15
Declarations of Conformity and CE-labelling	16

Manufacturer's Information

Art. No.: 200 20 000

Type: AHCON TS 9000 Tyre Lift and Spreader

Use: Semi-automatic Tyre Lift and Spreader for truck, tractor and Industrial tyres

Max. Tyre Diameter: 650 mm, Ø 2200

Max. Weight: 300 kg

Field Operation: For inspection and repair of truck tyres, tractor and industrial tyres up to 650 mm width.

Manufacturer: **AHCON WHEEL SERVICE EQUIPMENT**
Danmarksvej 25
8660 Skanderborg
+45 76152150
e-mail: ahcon@ahcon.dk

Distributor:



WARNINGS!

Safety Precautions

AHCON TS 9000 must only be used by trained personnel.

AHCON TS 9000 must only be used for lifting and spreading of tyres.

MUST UNDER NO CIRCUMSTANCES BE USED FOR LIFTING PERSONS !

Tyre service should only be performed by persons trained properly.

AHCON disclaim all responsibility for failures occurring by working procedures, which do not comply with procedures recommended by Ahcon and / or tyre and rim manufacturers (STRO).

Risks and Labelling

Danger of squeezing!



Pictograms and warning labels placed on the machine by the manufacturer must not be removed!

If warning labels are removed the responsibility of the manufacturer will be renounced.



Safety Precautions

Safety Distances

None for the user.

1 meter for the outsider.

AHCON recommends use of approved safety shoes.

Safety Devices

The machine is constructed in such a way that the operator cannot be harmed by normal use of the machine as long as the instructions are closely followed.

Warranty

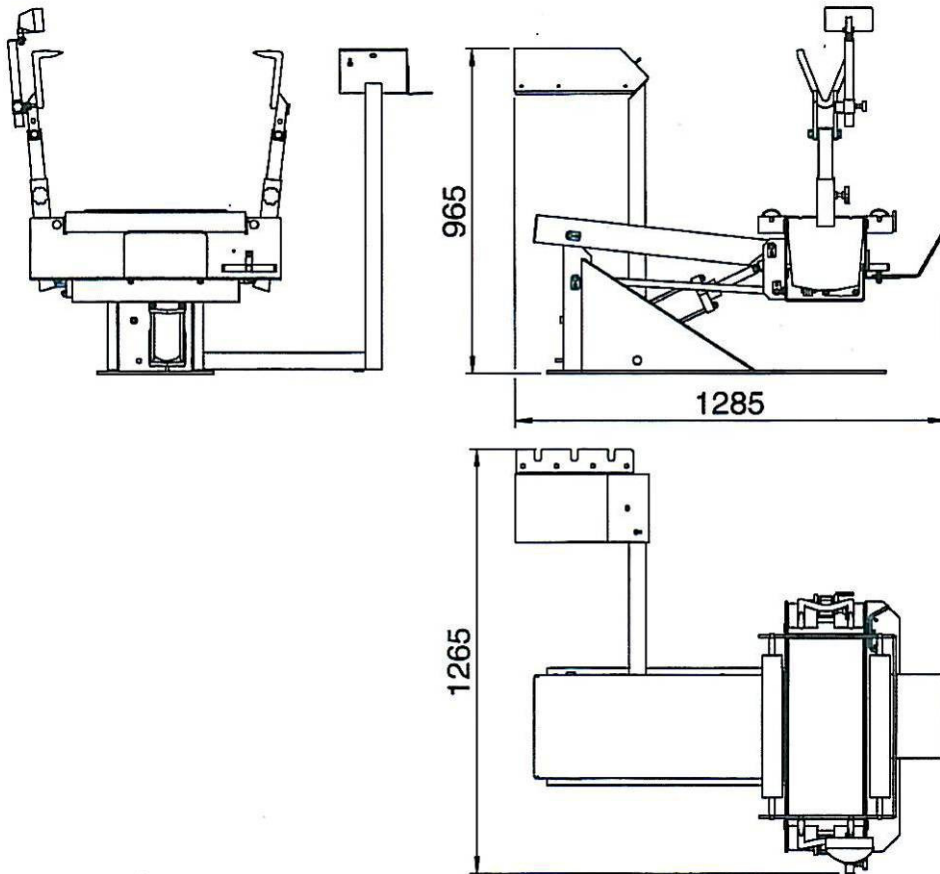
AHCON guarantees that the product will live up to the specifications at the time of delivery and will be faultless as regards materials and workmanship for a period of 12 months after the product has been invoiced to the end user.

Components and parts related to normal wear and tear are not included in the warranty.

AHCON will not be responsible for damages occurring by negligence, improper use, incorrect installation, etc.

All products and parts returned to Ahcon for repair and replacement must be forwarded carriage paid.

Dimensions and Weight



Shipping Dimensions

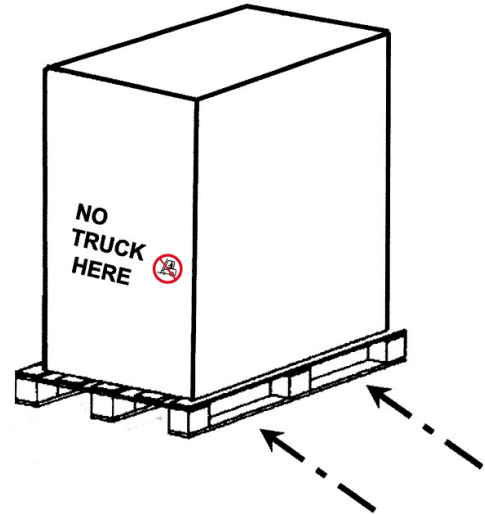
Height: 600 mm
Length: 800 mm
Width: 1150 mm

Weight: 125 kg
Shipping Weight: 140 kg

Transport and Handling

This machine has to be transported with a pallet stacker or a forklift according to the below instructions.

KEEP A SAFETY DISTANCE OF MIN. 2 M WHEN THE FORK-LIFT IS LOWERED!



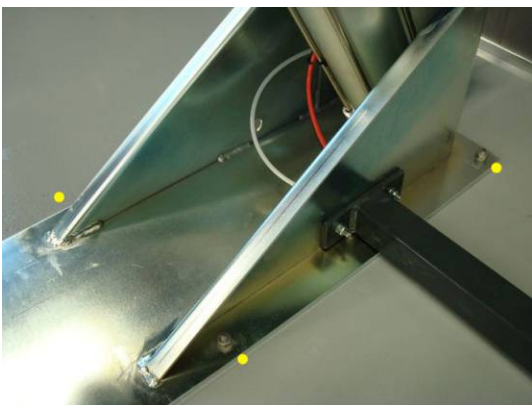
Place the machine close to the place of use.
Remove the bolts holding the machine to the pallet.

Unpacking

Remove the packing and check that the contents correspond to the order.

Place the machine on an even floor.

Fasten the machine to the floor with 4 expansion bolts.



Connection

Compressed Air Connection

Compression Pressure: 8 – 10 Bar.



Power Connection

This machine demands 230 V for inspection lamp.



OPERATION



Lower the tyre spreader to lowest position.
Height to ramp: 220 mm.
Roll the tyre by the ramp up on the rollers.



Adjust the arms to horizontal position for safe spreading.



Activate the pedal for spreading.



Activate the joystick for lifting and lowering.



Working height:

Min: 270 mm

Max: 930 mm

Noise

The noise level for this machine is less than 70 dB

Special Functions and Accessories

Art. Nr. 900 99 007 Set of extension arms for tractor and industrial tyres.



Art. Nr. 900 99 040 Tool box.



Standards for Built-in Parts.

Fastening parts
Machine elements
Air Accessories
Handles

All the above parts are produced in strengths according to the **DIN, ISO, DS and BS standards in force.**

Maintenance

It is recommended to add approx. 20 drops of thin, acid-free oil (CRC 556/ WD40) to the air inlet after each approx. 300 – 400 lifts.

WARNING ! Must NOT be cleaned with a pressure blower!

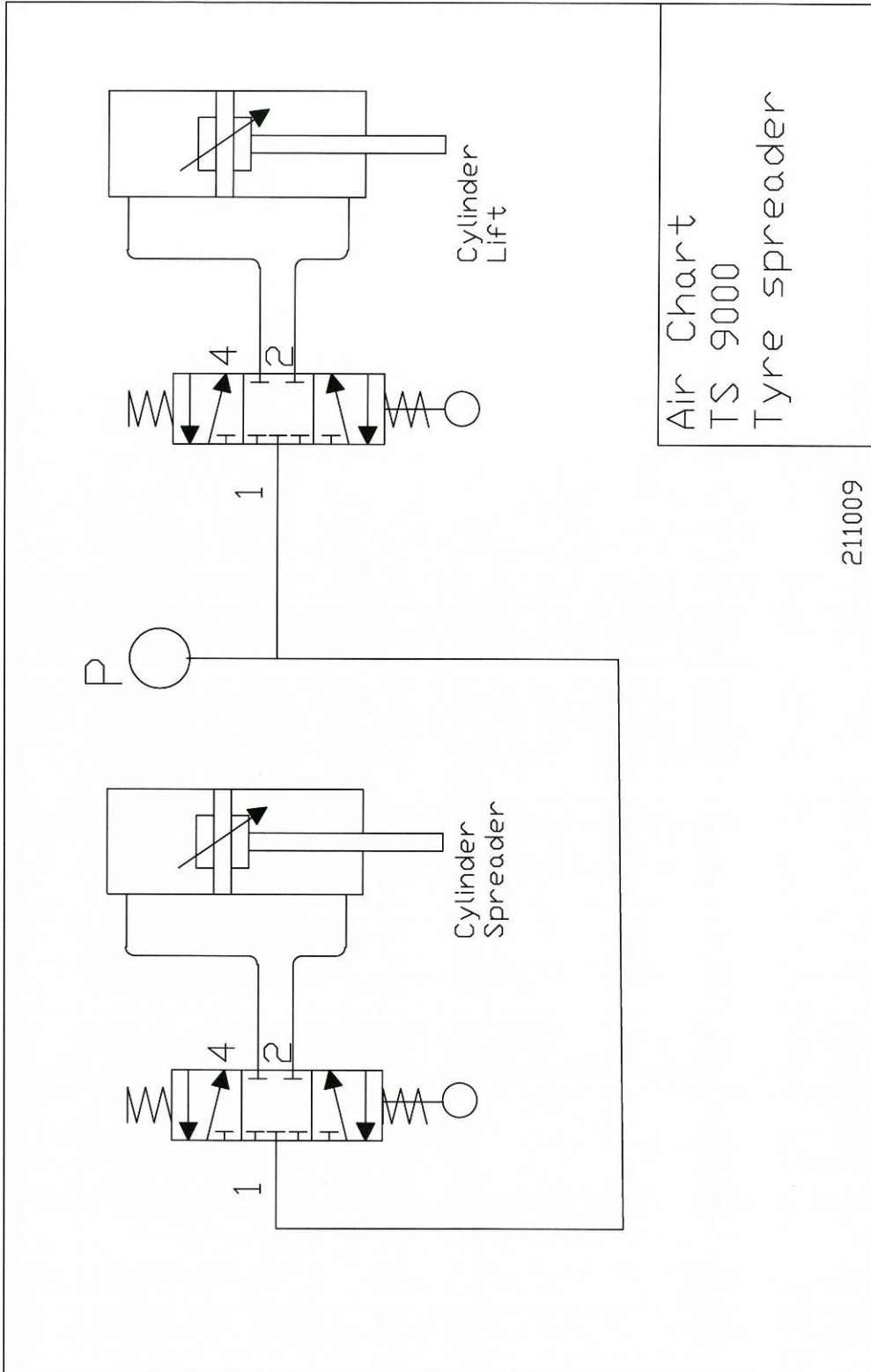
Repair

Do only use trained personnel for maintenance and repair of this machine.

WARNING !

The machine must not be connected to compressed air during maintenance and repair.

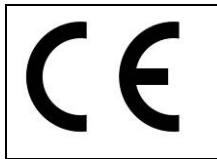
CHARTS



Declaration of Conformity:

AHCON WHEEL SERVICE EQUIPMENT ApS.
Danmarksvej 25
DK-8660 Skanderborg

declares that the following product:



Type: AHCON TS 9000

Art. No.: 200 20 000

Product No.:

Production year: 2009

has been produced in accordance with the Council's directives:

*2006/42/EF 17th of May 2006
altered by the following:
98/37/EEC.*

has been produced in accordance with the following standards:

DS/EN 292-1 and DS/EN 292-2
DS/EN 294
DS/EN 811
EN 951-1
DS/EN 349

Date:

Name: Bo Møller

Signed:

A handwritten signature in black ink, appearing to be 'Bo Møller', written over a horizontal line.

4509